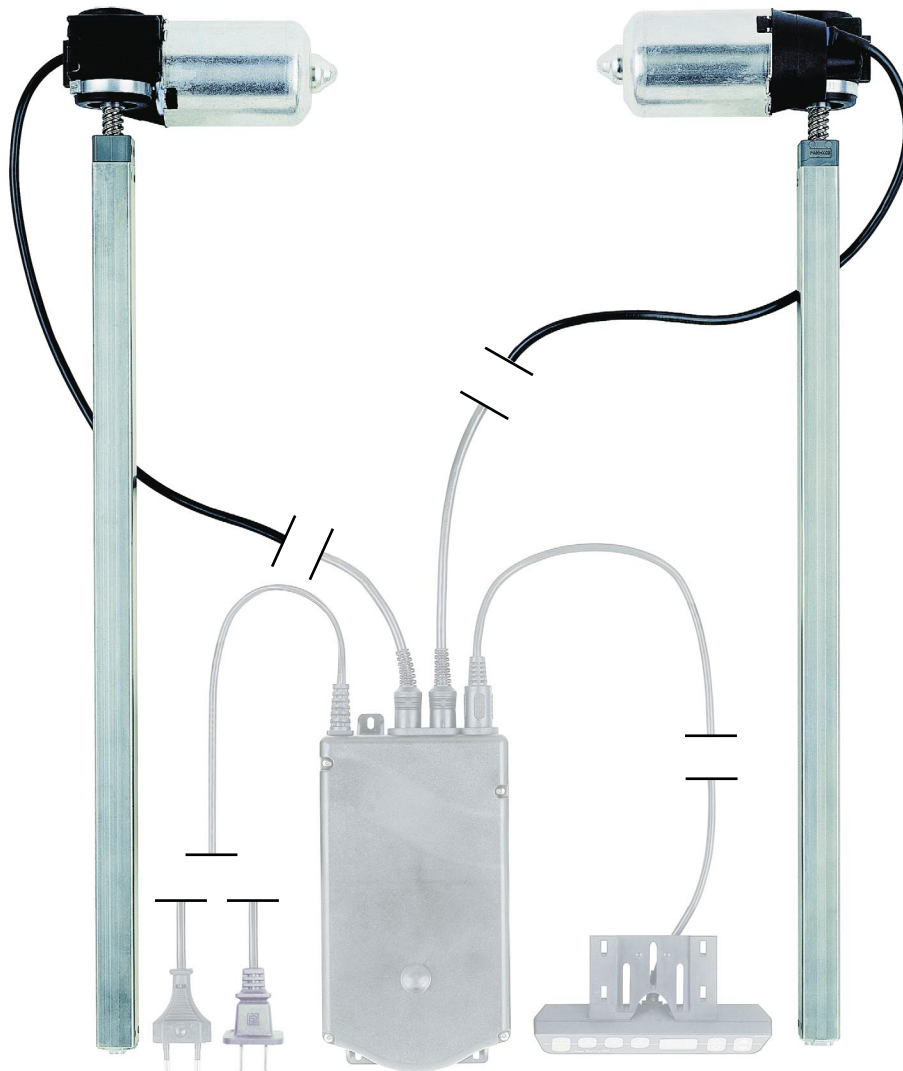


Electric spindle drive



4640



Description:

Motorized solution for sit/stand workplace.
Stepless height adjustment to customer specific travel distance.

Special features:

Simple mounting, integrated distance of travel output.
Single telescopic function. Synchronization with up to 26 actuators.

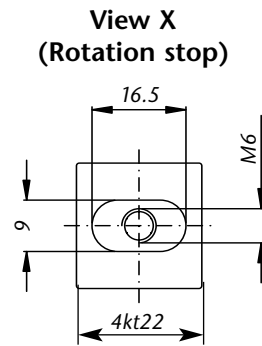
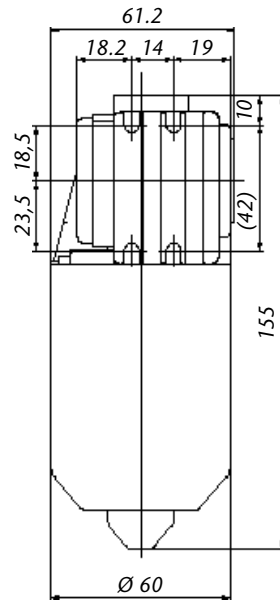
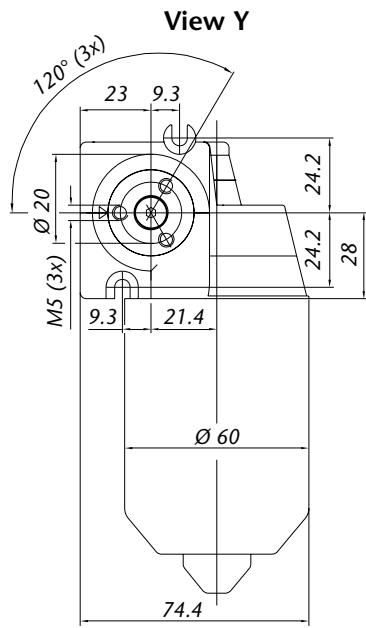
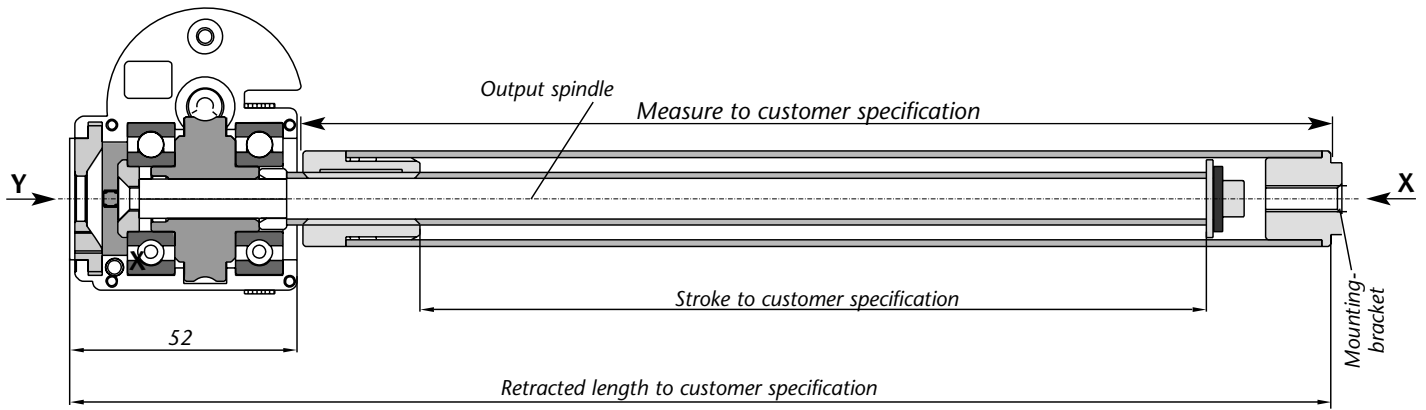
Customer specific:

As a result of the drive's modular structure, special customer requirements can be met.
The drive can be supplied with different spindle lengths and different spindle pitches.

Caution:

Please take into account that depending on the spindle pitch, the system could back-drive.

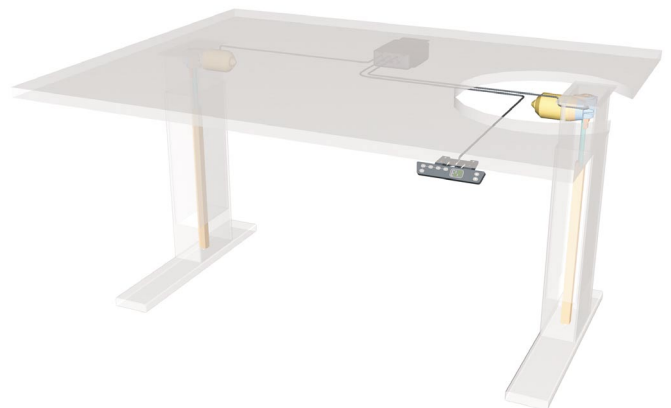
Electric spindle drive 4640*



Technical Data

Model	4640
Motor	DC Motor 18 V
Sensor/supply	Hall/5 V DC/0,3A
Current	average: 3,3 A at 5 Nm
Type of protection/CE	IP30, EN 55014/1, EN 55014/2
Duty cycle	20% (1 min. on, 4 min. off)
Max. input torque	5 Nm
Idling speed, rpm	90 rpm (24 V) 130 rpm (33 V)
Lifting force	800 N
lift	retracted height: -110 mm
Speed of movement	25 mm/s for spindle Tr12x12

Application example



* For synchronous control and desk switches, see separate control spec sheet



T.E.A. Machine Components Inc.

Your partner in quality engineering components since 2003

Thank you for downloading product information from TEA's wide range of engineering components.

Now, please contact us for any further information, prices and delivery.

Our contact details are:

T.E.A. Machine Components Inc.
2281-F Dabney Road
Virginia 23230
U.S.A.

Ph: +1-804-342-0004

Fax: +1-804-342-0006

Web: www.teausa.net

Email: sales@teausa.net

You are assured of prompt and efficient service at all times.