

METRIC TRAPEZOIDAL THREAD SPINDLE

Spindle - manufactured to DIN 103 Right or Left Hand Single Thread



Material: Steel AISI M1016

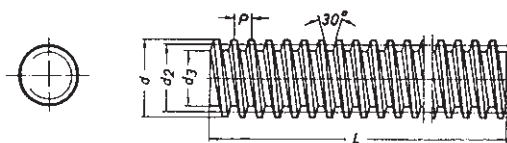
Quality: 7e

Lead accuracy 0.10mm per 300mm thread lengths (accumulating)

Straightness tolerance 0.10mm per 300mm thread lengths (accumulating)

All sizes generally in stock

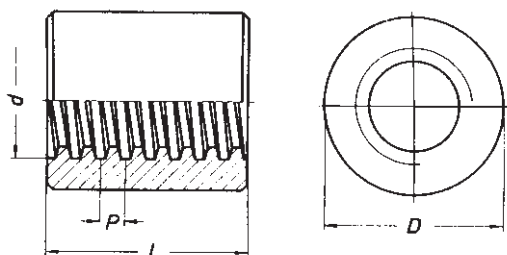
Left hand spindle available on request.



Pitch tolerance $\geq 0.3\text{mm}/300\text{mm}$
Right-hand thread

Part No.			Measurements in mm			Approx. Weight per mtr. lbs
			\emptyset d	p	D ₃ min.	
500mm	1000mm	2000mm				
TR10x3x500	TR10x3x1000	TR10x3x2000	10	3	05.84	1.0
TR12x3x500	TR12x3x1000	TR12x3x2000	12	3	07.84	1.7
TR16x4x500	TR16x4x1000	TR16x4x2000	16	4	10.80	2.7
TR20x4x500	TR20x4x1000	TR20x4x2000	20	4	14.80	4.4
TR24x5x500	TR24x5x1000	TR24x5x2000	24	5	17.50	6.0
TR30x6x500	TR30x6x1000	TR30x6x2000	30	6	21.90	9.9
TR36x6x500	TR36x6x1000	TR36x6x2000	36	6	27.90	14.8
TR40x7x500	TR40x7x1000	TR40x7x2000	40	7	30.50	17.6

Round Nuts - manufactured to DIN 103 Material: Steel (9SMnPb28k) Ident. No 1.0718 Bronze UNS C83600 Ident. No. 2.1090

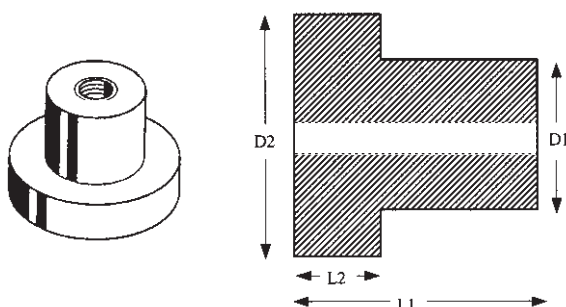


Steel			Bronze			Measurements in mm		
Part No.	Load*		Part No.	Load**		d _{xp}	\emptyset D	L
	kN	lb.f.		kN	lb.f.			
SR10x3	0.4	89	BR10x3	1.2	269	10x3	22	15
SR12x3	0.6	134	BR12x3	1.7	382	12x3	22	18
SR16x4	1.0	236	BR16x4	2.6	584	16x4	36	24
SR20x4	1.6	539	BR20x4	3.8	854	20x4	36	30
SR24x5	2.5	562	BR24x5	5.5	1236	24x5	50	36
SR30x6	3.8	854	BR30x6	8.0	1798	30x6	60	45
SR36x6	5.6	1258	BR36x6	11.0	2472	36x6	75	54
SR40x7	6.8	1528	BR40x7	16.0	3596	40x7	75	60

* Tensile strength load guideline only for steel nut using safety factor 6 in normal operation.

** Maximum load guideline for bronze nuts for rotating spindle in normal operation.

Flanged Round Nuts



Steel	Bronze on request	Measurements in mm			
Part No.	Part No.	D1	D2	L1	L2
SFR10X3	BFR10X3	20	35	15	6
SFR12x3	BFR12x3	24	42	20	7
SFR16X4	BFR16X4	30	52	24	10
SFR20x4	BFR20x4	38	62	26	11
SFR24X5	BFR24X5	50	77	33	13
SFR30x6	BFR30x6	58	90	48	15
SFR36X6	BFR36X6	80	115	60	20
SFR40x7	BFR40x7	80	140	65	20

All dimensions are subject to change without notice.