

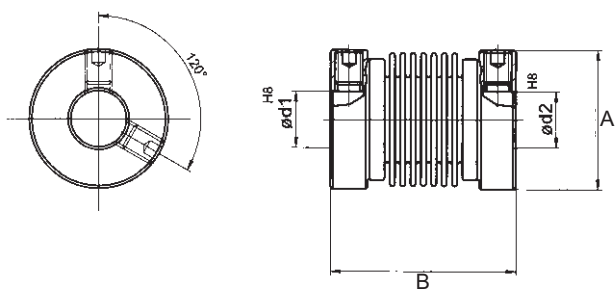
# BELLOWS COUPLINGS

## Stainless Steel with Aluminum Flange

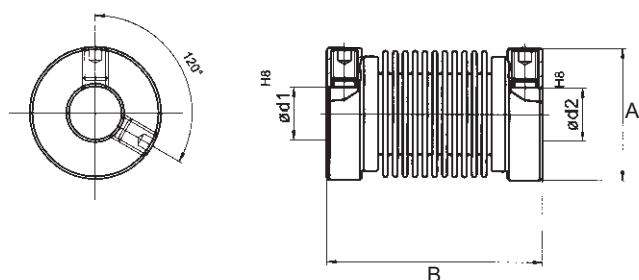


Technical Data		BKXS 1520	BKXS 1525	BKXS 2035
Max. speed	min <sup>-1</sup>	10000	10000	10000
Max. torque	Ncm	40	40	80
Max. radial offset	inch	±.008	±.012	±.012
Max. axial offset	inch	±.016	±.020	±.020
Max. angular offset	degree	±3	±4	±4
Torsion spring stiffness	Nm/rad	90	70	140
Radial spring stiffness	n/mm	40	15	10
Moment of inertia	gcm <sup>2</sup>	2.0	2.3	9
Max. clamping torque	Ncm	70	70	150
Weight approx.	lbs	.013	0.15	.035
Flange material		Anodised Alu.	Anodised Alu.	Anodised Alu.
Bellows material		Stainless steel	Stainless steel	Stainless steel

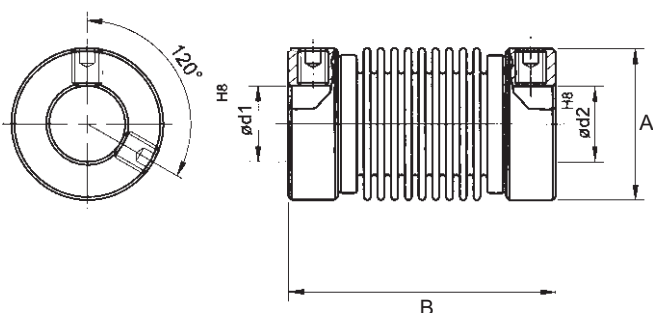
All sizes generally in stock



d1	d2	A Inch (mm)	B Inch (mm)	Grub screw DIN 916 mm	Part No.
1/8"	1/8"	.5905 ±.0393 (15±1)	.7873±.0393 (20±1)	M2.5 x 3	BKXS 1520 32/32
1/4"	1/4"	.5905 ±.0393 (15±1)	.7873±.0393 (20±1)	M2.5 x 3	BKXS 1520 63/63



d1	d2	A Inch (mm)	B Inch (mm)	Grub screw DIN 916 mm	Part No.
1/8"	1/8"	.5905 ±.0393 (15±1)	.9842±.0393 (25±1)	M3 x 4	BKXS 1525 32/32
1/4"	1/4"	.5905 ±.0393 (15±1)	.9842±.0393 (25±1)	M3 x 4	BKXS 1525 63/63



d1	d2	A Inch (mm)	B Inch (mm)	Grub screw DIN 916 mm	Part No.
1/4"	1/4"	.7873 ±.0393 (20±1)	1.3779±.0393 (35±1)	M4 X 6	BKXS 2035 63/63
3/8"	3/8"	.7873 ±.0393 (20±1)	1.3779±.0393 (35±1)	M4 X 6	BKXS 2035 95/95

All dimensions are subject to change without notice.