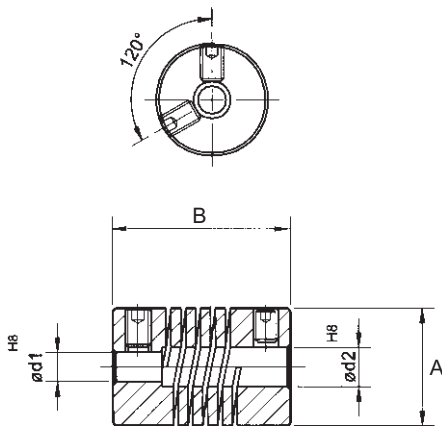


HELIX COUPLINGS

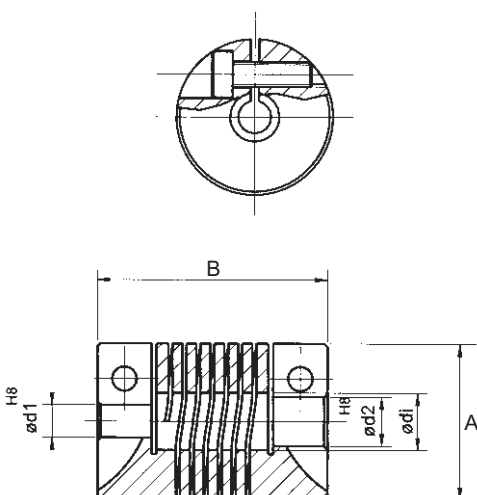
Chromed Aluminum

Technical Data		WKAS 1218	WKAS 1622	WKAS 1922	WKAS 2532	WKAK 1625	WKAK 1928	WKAK 2532	WKAK 3038
Max. speed	min 1	8000	8000	8000	8000	6000	6000	6000	6000
Max. torque	Ncm	25	40	60	10	60	80	120	150
Max. radial offset	inch	± .006	± .008	± .010	± .012	± .008	± .010	± .014	± .014
Max. axial offset	inch	± .010	± .012	± .016	± .020	± .012	± .016	± .020	± .020
Max. angular offset	degree	± 2.5	± 3	± 3.5	± 4	± 3.5	± 4	± 4	± 4
Torsion spring stiffness	Nm/rad	2.8	7.5	9	18	5.5	8	16	19
Radial spring stiffness	N/mm	28	34	40	50	30	36	45	60
Moment of inertia	gcm ²	0.83	3.2	6.7	30	3.8	8.7	29	76
Max clamping torque	Ncm	35	50	50	120	50	80	100	100
Weight approx.	lbs	.009	.020	.028	.077	.022	.035	.074	.058
Material	Chromed Aluminum								

All sizes generally in stock



d1	d2	A Inch (mm)	B Inch (mm)	Grub screw DIN 916 mm	Part No.
1/8"	1/8"	.4724 (12)	.7086 (18)	M2.5 x 3	WKAS 1218 32/32
1/8"	1/8"	.6299 (16)	.8661 (22)	M3 x 5	WKAS 1622 32/32
1/4"	1/4"	.7480 (19)	.8661 (22)	M3 X 5	WKAS 1922 63/63
1/4"	1/4"	.9842 (25)	1.2598 (32)	M4 X 6	WKAS 2532 63/63
3/8"	3/8"	.9842 (25)	1.2598 (32)	M4 X 6	WKAS 2532 95/95



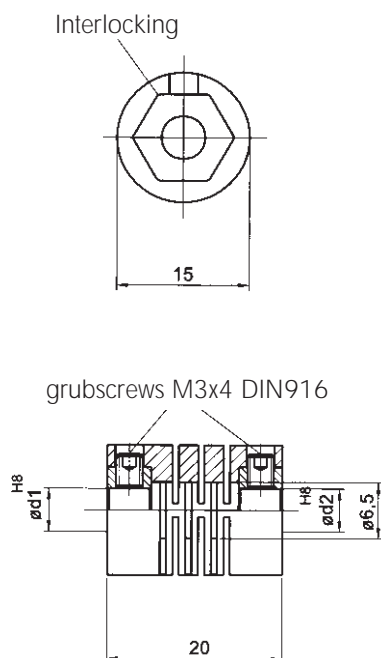
d1	d2	A Inch (mm)	B Inch (mm)	Pen head screw DIN 912 mm	Part No.
1/8"	1/8"	.6299 (16)	.9842 (25)	M3 x 10	WKAK 1625 32/32
1/4"	1/4"	.7480 (19)	1.1023 (28)	M3 X 10	WKAK 1928 63/63
1/4"	1/4"	.9842 (25)	1.2598 (32)	M3 X 10	WKAK 2532 63/63
3/8"	3/8"	.9842 (25)	1.2598 (32)	M3 X 10	WKAK 2532 95/95
1/2"	1/2"	1.1810 (30)	1.4960 (38)	M4 x 2	WKAK 3038 127/127

All dimensions are subject to change without notice.

HELIX COUPLINGS - Low Cost Version



Technical Data		SKPS1520
Max. speed	min ⁻¹	12000
Max. torque	Ncm	20
Max. radial offset	inch	± .012
Max. axial offset	inch	± .008
Max. angular offset	degree	± 2.5
Torsion spring stiffness	Nm/rad	12
Radial spring stiffness	N/mm	45
Moment of inertia	gcm ²	2
Max clamping torque	Ncm	70
Weight approx.	lbs	.02
Material		Polymid, fibreglass reinforced
Hubs		Brass



d1 mm	d2 mm	Part No.
3	3	SKPS 1520 03/03
3	5	SKPS 1520 03/05
3	6	SKPS 1520 03/06
4	4	SKPS 1520 04/04
4	5	SKPS 1520 04/05
4	6	SKPS 1520 04/06
5	5	SKPS 1520 05/05
5	6	SKPS 1520 05/06
6	6	SKPS 1520 06/06
1/4"	1/4"	SKPS 1520 63/63

Helix couplings in **BOLD** type are our usual stock items - all other sizes available on request

Note: The bore inside the coupling is bigger than d1 and d2. This means, when you use longer shafts, the inside wall of the coupling cannot touch the shaft.

All dimensions are subject to change without notice.