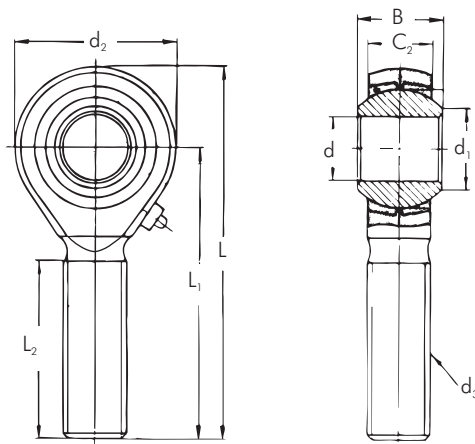


Rod End Male Type



- Insertion type
- With grease nipple
- Male thread
- Material: Body: Low carbon steel, heat treated, nickle plated
Ball: Chromium steel Gcr15, heat treated, hard chrome plated
Insert: Copper alloy

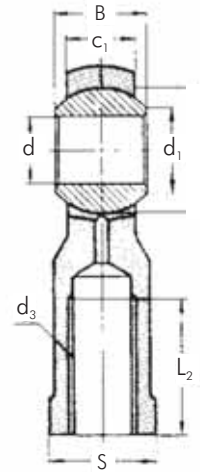
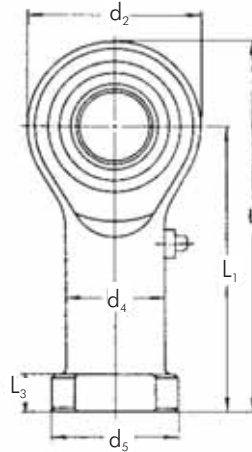
Ordering example:

POS = metric size
ARE = imperial size
L = left hand thread
add to P/N eg. POS-5-L

Part No.	Dimensions in mm										Load Rating kN		Wt. (g)
	d	d ₃	d ₂	C ₁	B	d ₁	L	L ₁	L ₂	α° »	Dynamic	Static	
	POS 5	5	M 5x0.8	16	6	8	7.7	41	33	20	13	3.3	
POS 6	6	M 6x1	18	6.75	9	9	45	36	22	13	4.3	5.3	19
POS 8	8	M 8x1.25	22	9	12	10.4	53	42	25	13	6.8	8.5	32
POS 10	10	M10x1.5	26	10.5	14	12.9	61	48	29	13	10	11	54
POS 12	12	M12x1.75	30	12	16	15.4	69	54	33	13	13	14	85
POS 14	14	M14x2	34	13.5	19	16.9	77	60	36	13	17	20	126
POS 16	16	M16x2	38	15	21	19.4	85	66	40	13	21	25	185
POS 18	18	M18x1.5	42	16.5	23	21.9	93	72	44	13	26	30	260
POS 20	20	M20x1.5	46	18	25	24.4	101	78	47	13	31	35	340
POS 22	22	M22x1.5	50	20	28	25.8	109	84	51	13	38	43	435
POS 25	25	M24x2	60	22	31	29.6	124	94	57	13	47	65	650
POS 30	30	M30x2	70	25	37	34.8	145	110	66	13	63	86	1070
ARE 4	1/4"	UNF-28	18	7	9	9	45	36	22	12.7	460	270	19
ARE 5	5/16"	UNF-24	22	9	12	10.4	53	42	25	15.88	840	430	36
ARE 6	3/8"	UNF-24	26	10.5	14	12.9	61	48	29	19.05	1340	630	60
ARE 8	1/2"	UNF-20	30	12	16	15.4	69	54	33	22.23	1650	800	89
ARE 10	5/8"	UNF-18	38	15	21	19.4	85	66	40	28.58	2470	1290	181
ARE 12	3/4"	UNF-16	46	18	25	24.4	101	78	47	34.93	3460	1890	333

All dimensions are subject to change without notice.

Rod End Female Type



- Insertion type
- With grease nipple
- Female thread
- Material: Body: Low carbon steel, nickle plated, heat treated
Ball: Chromium steel GCr15, heat treated, hard chrome plated
Insert: Copper alloy

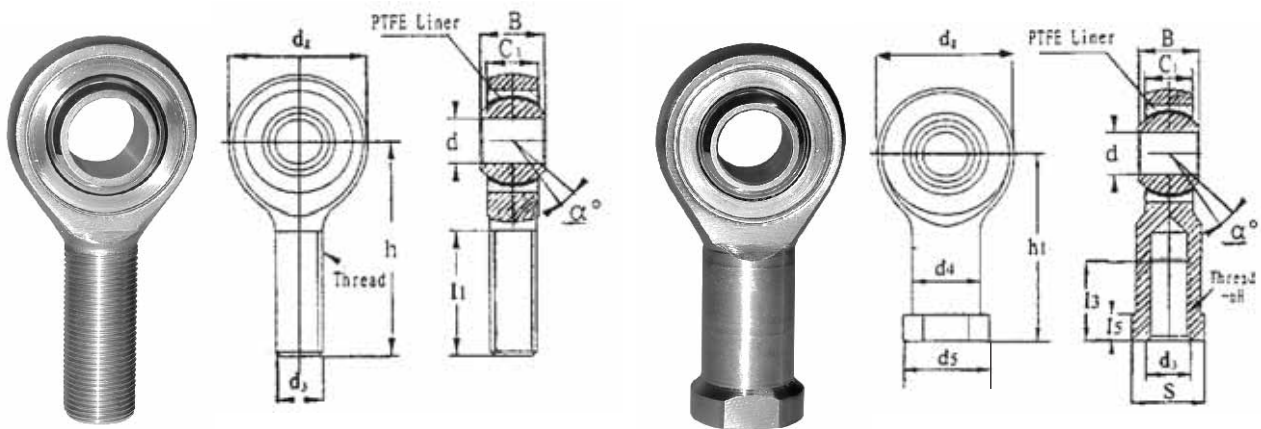
Ordering example:

PHS = metric size
AR = imperial size
L = left hand thread
add to P/N eg. PHS-5-L

Part No.	(mm) Dimensions														Load Rating kN		Wt. (g)
	d	d ₃	d ₂	C ₁	B	d ₁	L	L ₃	L ₁	L ₂	S	d ₄	d ₅	α°	Dynamic	Static	
																»	
PHS 5	5	M 5x0.8	16	6	8	7.7	35	4	27	14	9	9	11	13	3.3	3.9	16
PHS 6	6	M 6x1	18	6.75	9	9	39	5	30	14	11	10	13	13	4.3	5.3	26
PHS 8	8	M 8x1.25	22	9	12	10.4	47	5	36	17	14	12.5	16	13	6.8	8.5	44
PHS 10	10	M10x1.5	26	10.5	14	12.9	56	6.5	43	21	17	15	19	13	10	11	72
PHS 12	12	M12x1.75	30	12	16	15.4	65	6.5	50	24	19	17.5	22	13	13	14	108
PHS 14	14	M14x2	34	13.5	19	16.9	74	8	57	27	22	20	25	13	17	20	161
PHS 16	16	M16x2	38	15	21	19.4	83	8	64	33	22	22	27	13	21	25	225
PHS 18	18	M18x1.5	42	16.5	23	21.9	92	10	71	36	27	25	31	13	26	30	295
PHS 20	20	M20x1.5	46	18	25	24.4	100	10	77	40	30	27.5	34	13	31	35	382
PHS 22	22	M22x1.5	50	20	28	25.8	109	12	84	43	32	30	37	13	38	43	488
PHS 25	25	M24x2	60	22	31	29.6	124	12	94	48	36	33.5	42	13	47	65	749
PHS 28	28	M27x2	66	25	35	32.3	136	12	103	53	41	37	46	13	59	77	949
PHS 30	30	M30x2	70	25	37	34.8	145	15	110	56	41	40	50	13	63	86	1130
AR 4	1/4"	UNF-28	18	7	9	9	39	5	30	14	11	10	13	12.7	690	270	26
AR 5	5/16"	UNF-24	22	9	12	10.4	47	5	36	17	14	12.5	16	15.88	990	430	45
AR 6	3/8"	UNF-24	26	10.5	14	12.9	57	6.5	43	21	17	15	19	19.05	1340	630	76
AR 8	1/2"	UNF-20	30	12	16	15.4	66	6.5	50	24	19	17.5	22	22.23	1650	800	114
AR 10	5/8"	UNF-18	38	15	21	19.4	83	8	64	33	22	22	27	28.58	2470	1290	200
AR 12	3/4"	UNF-16	46	18	25	24.4	100	10	77	40	30	27.5	37	34.93	3460	1890	372

Stainless Steel Rod Ends

Metric - Maintenance Free



Male - POS ... SS

Female - PHS ... SS

Part No.		Dimensions in mm													α°	Radial Static Load (kN)	
Male	Female	d	B	C ₁ max	d ₂ max	d ₃ Thread	Male			Female						Male	Female
							h	l ₁ min	h ₁	l ₃ min	d ₄ max	d ₅ max	l ₅ max	S			
POS 6 SS	PHS 6 SS	6	9	7.5	20	M6x1	36	21	30	9	10.0	13	5	10	9	4.6	8.7
POS 8 SS	PHS 8 SS	8	12	9.5	24	M8x1.25	42	25	36	12	12.5	16	5	13	12	8	12
POS 10 SS	PHS 10 SS	10	14	11.5	30	M10x1.5	48	28	43	15	15.0	19	6.5	16	10	13	20
POS 12 SS	PHS 12 SS	12	16	12.5	34	M12x1.75	54	32	50	18	17.5	22	6.5	18	12	20	24
POS 16 SS	PHS 16 SS	16	21	15.5	42	M16x2	66	37	64	24	22.0	27	8	24	14	33	
POS 20 SS	PHS 20 SS	20	25	18.5	50	M20x1.5	78	45	77	30	27.5	34	10	30	14	44	

Tolerances in Millimeters

Bore Diam. (mm)	d H7
6	+0.012 0
8, 10	+0.015 0
12	+0.018 0
16	+0.018 0
20	+0.021 0

Specifications:

Body: Stainless steel
 Race: Stainless steel, PTFE Liners bonded to I.D.
 Ball: AISI 440C stainless steel, heat treated
 PTFE = poly tetra fluoro ethylene - self lubricating

Left Hand Thread:

Add "L" to prefix to indicate left hand thread
 eg. POS 6 L SS

Stainless Steel Rod Ends

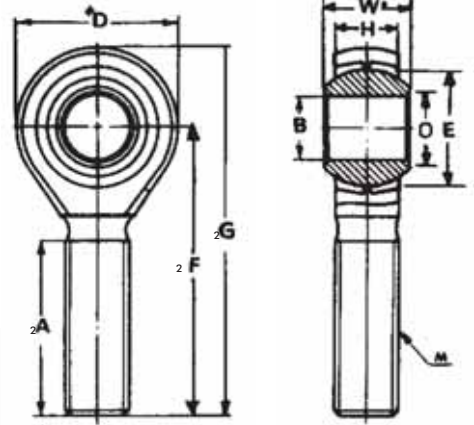
Inch sizes

Male & Female - Right & Left

Material:

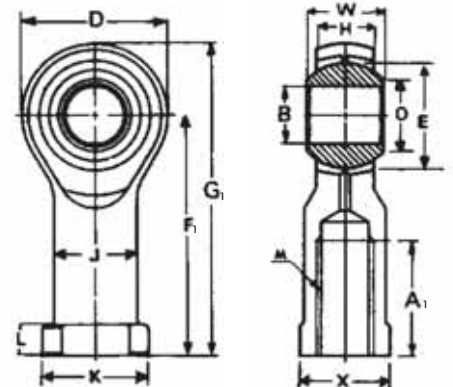
Housing: SS304

Ball: SS440C heat treated - bonded to housing by PTFE liner
 PTFE = poly tetra fluoro ethylene - self lubricating



Male Rod End - Right Hand Thread

Male Part No.	B	W	H	O	D	F2	G2	A2	E	Thread M	Maximum static load kg.f		Approx. Wt gm.
											Radial	Axial	
PIM 3/16 SS	.1900	.312	.250	.306	.625	1.250	1.563	.750	.4375	.1900 UNF-32	306	215	14
PIM 1/4 SS	.2500	.375	.281	.355	.750	1.562	1.937	1.000	.5156	.2500 UNF-28	453	272	23
PIM 5/16 SS	.3125	.437	.344	.447	.875	1.875	2.312	1.250	.6250	.3125 UNF-24	771	408	37
PIM 3/8 SS	.3750	.500	.406	.517	1.000	1.938	2.438	1.250	.7187	.3750 UNF-24	1270	589	55
PIM 7/16 SS	.4375	.562	.437	.586	1.125	2.125	2.688	1.375	.8125	.4375 UNF-20	1610	748	78
PIM 1/2 SS	.5000	.625	.500	.698	1.312	2.438	3.094	1.500	.937	.5000 UNF-20	2041	1065	123
PIM 5/8 SS	.6250	.750	.562	.839	1.500	2.625	3.375	1.625	1.125	.6250 UNF-18	2449	1270	186
PIM 3/4 SS	.7500	.875	.687	.978	1.750	2.875	3.750	1.750	1.312	.7500 UNF-16	3458	1814	295



Female Rod End - Right Hand Thread

Female Part No.	B	W	H	O	D	F1	G1	A1	K	X	J	L	E	Thread M	Maximum static load kg.f		Approx. Wt gm.
															Radial	Axial	
PIF 3/16 SS	.1900	.312	.250	.306	.625	1.062	1.375	.562	.406	.312	.312	.187	.4375	.1900 UNF-32	614	226	14
PIF 1/4 SS	.2500	.375	.281	.355	.750	1.312	1.687	.750	.468	.375	.375	.187	.5156	.2500 UNF-28	691	272	23
PIF 5/16 SS	.3125	.437	.344	.447	.875	1.375	1.812	.750	.500	.437	.437	.187	.6250	.3125 UNF-24	952	419	37
PIF 3/8 SS	.3750	.500	.406	.517	1.000	1.625	2.125	.937	.687	.562	.500	.250	.7187	.3750 UNF-24	1315	612	59
PIF 7/16 SS	.4375	.562	.437	.586	1.125	1.812	2.375	1.062	.750	.625	.562	.250	.8125	.4375 UNF-20	1632	793	82
PIF 1/2 SS	.5000	.625	.500	.698	1.312	2.125	2.781	1.187	.875	.750	.625	.250	.937	.5000 UNF-20	2041	1020	132
PIF 5/8 SS	.6250	.750	.562	.839	1.500	2.500	3.250	1.500	1.000	.875	.750	.312	1.125	.6250 UNF-18	2449	1270	191
PIF 3/4 SS	.7500	.875	.687	.978	1.750	2.875	3.750	1.750	1.125	1.000	.875	.312	1.312	.7500 UNF-16	3447	1859	286

For left hand thread add "L" to Part No. eg. PIF3/16 L SS



T.E.A. Machine Components Inc.

Your partner in quality engineering components since 2003

Thank you for downloading product information from TEA's wide range of engineering components.

Now, please contact us for any further information, prices and delivery.

Our contact details are:

T.E.A. Machine Components Inc.
2281-F Dabney Road
Virginia 23230
U.S.A.

Ph: +1-804-342-0004

Fax: +1-804-342-0006

Web: www.teausa.net

Email: sales@teausa.net

You are assured of prompt and efficient service at all times.