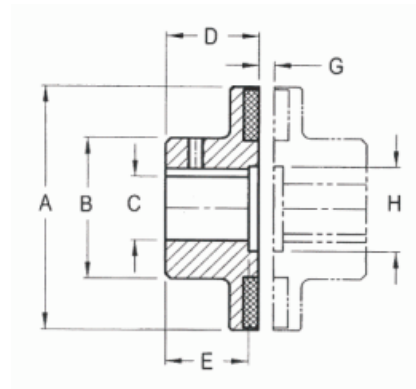




# Permanent Magnet Coupling



P/N	HP @ 1750 rpm	KW @ 1750 rpm	Max Speed	*Weight per hub Kg.	Torque Normal Nm	Torque Peak Nm	A mm	B mm	C Max mm	D mm	E mm	G mm	H mm
PMK20	0.03	0.02	42500	0.05	0.11	0.16	26.92	20.57		16.00	16.00	3.18	N/A
PMK40	0.08	0.06	26000	0.10	0.45	0.56	43.69	20.57	see chart	14.99	15.00	4.83	N/A
PMK50	0.17	0.13	23000	0.15	0.68	0.90	50.29	28.45	below	14.99	15.00	4.83	N/A
PMK60	0.25	0.19	19000	0.26	1.02	1.36	59.94	38.10		19.05	19.00	4.83	N/A
PMK70	0.45	0.34	15500	0.58	1.69	2.26	72.64	50.80		25.40	25.40	4.83	N/A
PMK90	1	0.75	12000	1.01	4.07	4.52	93.47	69.85	34.93	25.40	25.40	6.35	N/A
PMK110	2	1.49	10500	1.16	8.13	9.04	106.68	69.85	34.93	25.40	31.75	6.35	N/A
PMK130	3	2.24	9000	1.99	12.20	13.56	129.54	76.20	41.28	38.10	31.75	6.35	52.32
PMK150	5	3.73	9200	2.17	20.34	22.60	124.97	69.85	41.28	38.10	41.40	6.35	52.32
PMK170	7.5	5.59	7800	3.14	30.51	33.90	124.97	107.95	53.98	47.50	41.40	6.35	68.32
PMK190	10	7.46	7800	4.07	40.67	45.19	147.07	107.95	60.33	52.58	45.97	6.35	77.72
PMK200	13	9.69	7800	3.23	53.10	61.01	147.07	60.20	38.10	41.66	31.75	6.35	47.75

**Notes:**

\*Weight per hub includes magnets  
Hubs sold separately.

Please refer to recommended bore sizes in the table below and then **How to Order**.

Bore Code	0000	0125	0188	0197	0236	0250	0313	0315	0375	0394	0433	0500	0551	0625	0748	0750	0875	1000
Bore Size	Solid	1/8"	3/16"	5mm	6mm	1/4"	5/16"	8mm	3/8"	10mm	11mm	1/2"	14mm	5/8"	19mm	3/4"	7/8"	1"
P/N																		
PMK20		X	X	X	X	X	X	X										
PMK30	X		X	X	X	X	X	X	X	X		X						
PMK40	X		X	X	X	X	X											
PMK50	X				X	X	X	X	X	X	X	X						
PMK60	X								X		X	X	X	X	X	X		
PMK70	X										X	X	X	X	X	X	X	X
PMK90		X																

**How to Order:**

P/N for 1 hub + bore code + P/N for the other hub + bore code  
EG: PMK30-0000(solid) + PMK30-0236 (6mm bore)