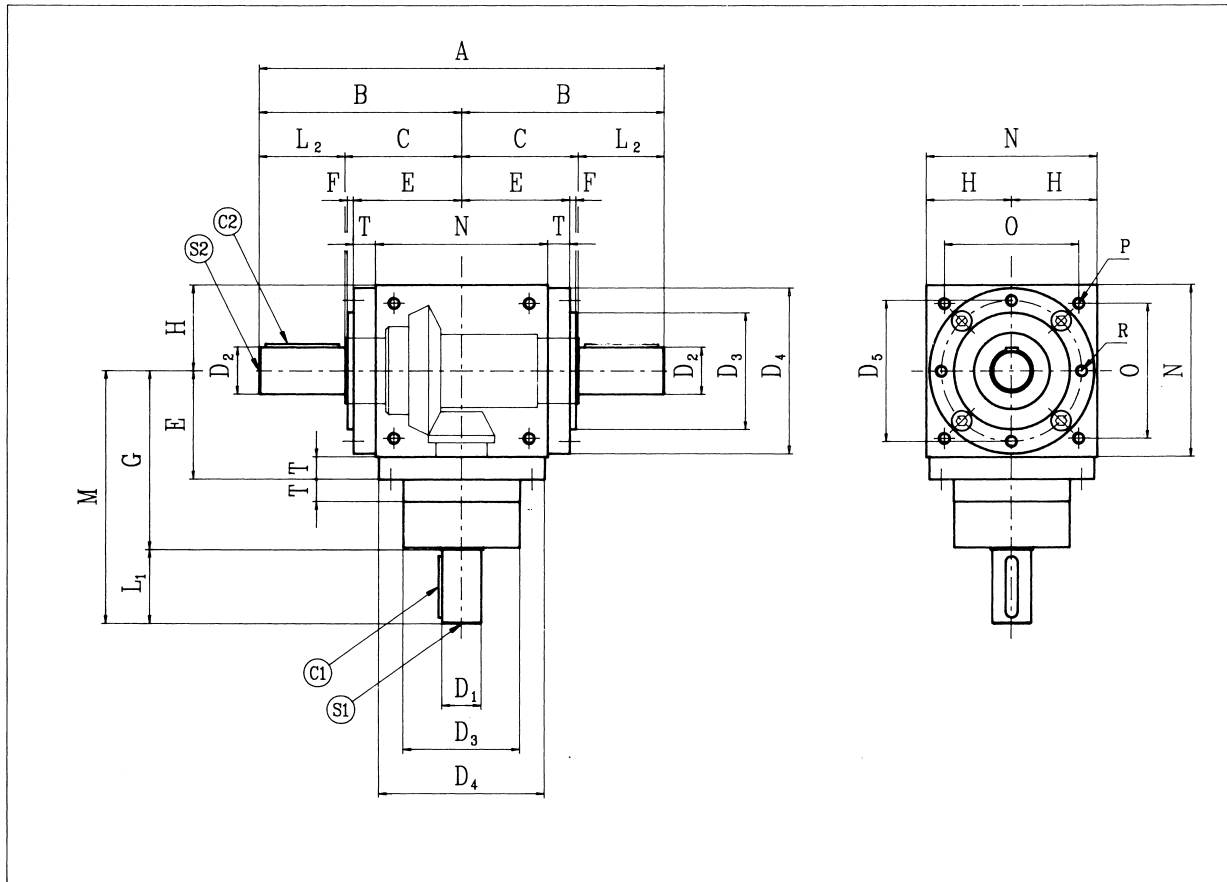


SPIRAL BEVEL GEARBOX

TYPE AP

DIMENSIONS



Use type 'AP' to transmit greater through torque than type 'A' (see page 76).
The gear rating remains as type 'A'.

All dimensions in mm

SIZE	ratio : 1	A	B	C	D ₁	D ₂	D ₃	D ₄	D ₅	E	F	G	H	L ₁	L ₂
BG12															
BG19	1, 2, 3	230	115	65	19	24	60	86	72	59	4	100	45	40	50
	4, 5				14									30	
BG24	1, 2, 3	280	140	80	24	32	70	105	88	73	5	115	55	50	60
	4, 5				19									40	
BG32	1, 2, 3	330	165	95	32	38	95	135	115	88	5	145	70	60	70
	4, 5				24									50	
BG38	1, 2, 3	380	190	110	38	42	120	165	145	103	5	170	85	70	80
	4, 5				28									60	
BG42	1, 2, 3	430	215	125	42	48	135	190	165	118	5	195	100	80	90
	4, 5				32									60	
BG55	1, 2, 3	520	260	150	55	70	170	230	205	143	5	245	120	110	110
	4, 5				42									80	
BG75	1, 2, 3	750	375	225	75	90	/	300	/	195	/	350	165	150	150
	4, 5				55		/		110						

All dimensions are subject to change without notice.