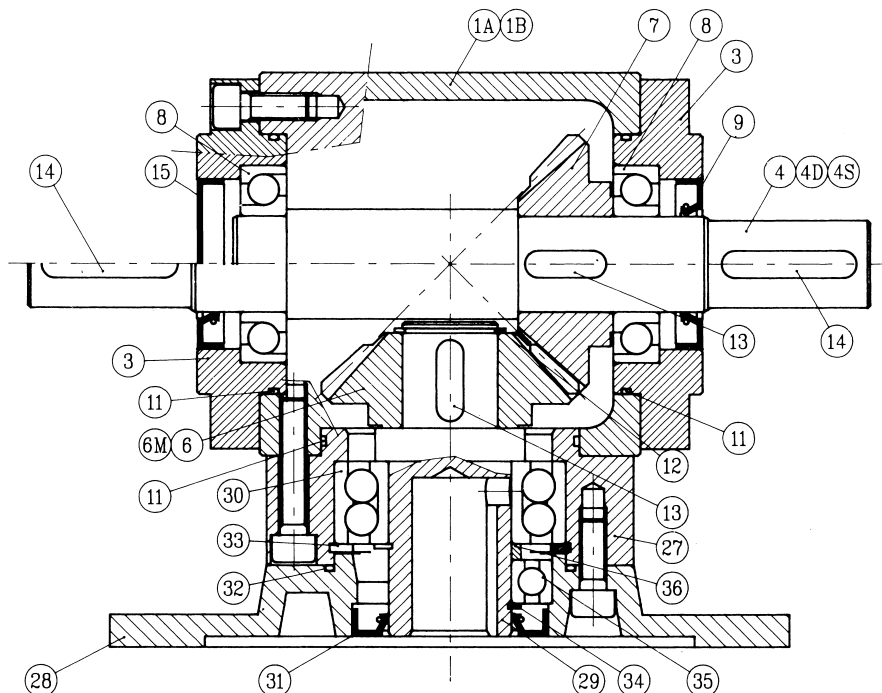


12. PARTS LIST

12.1 BEVEL GEARBOX WITH IEC MOTOR FLANGE ADAPTER (M).



All dimensions in mm

Part. No.	Description	BG12	BG19	BG24	BG32	BG38	BG42	BG55	BG75
27	Input housing	/	4014BGxx						
6A	Bevel pinion 1:1	5111BGxx							
6M	Bevel pinion	51yyBGxxDzzz							
7	Bevel wheel	52yyBGxx							
28	Motor flange	83BGxxDzzz							
29	Shaft hub 1:1	3006BGxxDzzz							
30	Ball bearing	6003-2Z	3205A	3207A	3209A	3211	3212	3214	
31	Oil seal	25x47x7	25x40x7	35x62x10	45x62x10	55x90x10	60x110x10	70x110x10	
32	O-Ring	/	2212	2287	2350	3400	4437	4500	
33	Circlip	/	52 I	72 I	85 I	100 I	110 I	125 I	
34	Circlip	25 E	25 E	35 E	45 E	55 E	60 E	70 E	
35	Ball bearing	6005-2Z	/	/	/	/	6012	6014	
36	Distance piece	/	/	/	/	/	84BG42	84BG55	

xx = Size (12-19...55-75)

yy = Ratio (11=1/1 - 12=2/1.....)

zzz = IEC motor frame size (063.....160)

For the ratio 1:1 the pinion is standard type.

For ratio above 1:1 the pinion is integral with the shaft hub (part. no. 6M).

For size BG12 the input housing is not there because it is part of the motor flange (part. no. 28).

All dimensions are subject to change without notice.