

# STANDARD CARRIAGES

## - to suit Roller Bearing 120° Guide Wheels and Guideways

Standard carriages, are suited to most applications. If a carriage has to be manufactured specially, we can build one per customer specifications or if the customer wants to build it, we can supply just the guideway and wheels.

To make the designer's job easier when it comes to calculations, Table II features the minimum possible dimension. Carriage stability can be further improved by increasing value B2 accordingly.

With the view to tailoring solutions to reflect customer needs as closely as possible at all times, we supply the same type of carriages with holes bored ready for fitting any counterplates. Furthermore, special holes and machining can also be performed to your specifications.

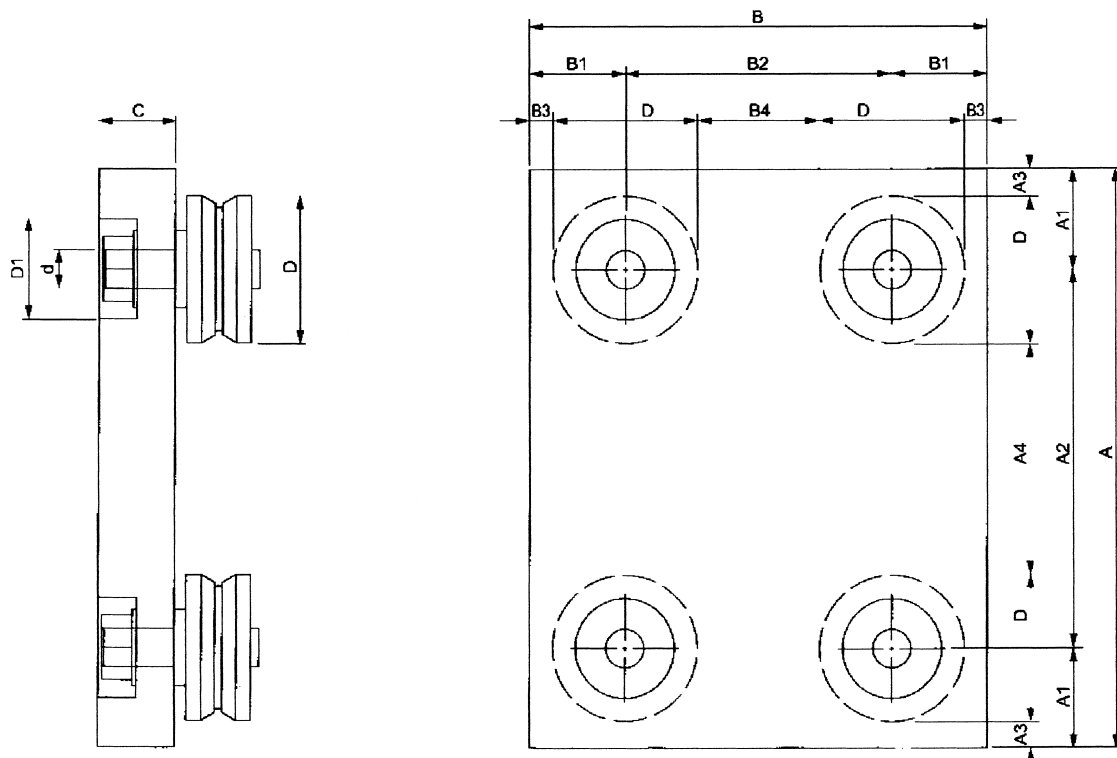


Table I

Carriage Type*	Dimensions (in mm)														Weight (lbs.)	
	A	A <sub>1</sub>	A <sub>2</sub>	A <sub>3</sub> **	A <sub>4</sub> **	B	B <sub>1</sub>	B <sub>2</sub>	B <sub>3</sub> *	B <sub>4</sub> *	C	d	D	D <sub>1</sub>	Steel	Aluminum
M106_	120	18.5	83	7.5	61	80	19.5	41	8.5	19	10	6	22	16	1.5	0.6
M208_	140	25.0	90	10.0	60	120	25.0	70	10.0	40	15	8	30	20	4.2	1.3
M208R_	140	25.0	90	10.0	60	120	25.0	70	10.0	40	20	10	30	26	4.9	1.5
M210_	150	26.0	98	6.5	59	120	25.0	70	5.5	31	20	10	39	26	5.5	2.0
M312_	180	27.0	126	7.0	86	150	30.0	90	10.5	49	20	12	40	30	8.4	2.9
M316_	180	27.0	126	7.0	86	150	30.0	90	10.5	49	25	16	40	36	10.6	3.5
M416_	200	30.0	140	1.5	83	180	40.0	100	11.5	43	25	16	57	36	15.4	5.7
M420_	200	30.0	140	1.5	83	180	40.0	100	11.5	43	25	20	57	42	15.4	5.7

Table II

Carriage Type*	Minimum dimensions for special carriage													
	A	A <sub>1</sub>	A <sub>2</sub>	A <sub>3</sub> **	A <sub>4</sub> **	B	B <sub>1</sub>	B <sub>2</sub>	B <sub>3</sub> *	B <sub>4</sub> *	C	d	D	D <sub>1</sub>
M106_	107	12	83	1	61	51	12.0	27	1	5	10	6	22	16
M208_	122	16	90	1	60	67	16.0	35	1	5	15	8	30	20
M208R_	122	16	90	1	60	67	16.0	35	1	5	20	10	30	26
M210_	138	20	98	1	60	77	17.5	40	1	5	20	10	39	26
M312_	164	22	126	1	86	91	22.0	47	1	5	20	12	40	30
M316_	164	22	126	1	86	91	22.0	47	1	5	25	16	40	36
M416_	200	30	140	1	83	123	30.0	63	1	5	25	16	57	36
M420_	200	30	140	1	83	123	30.0	63	1	5	25	20	57	42

\* A = aluminum S = steel

\*\* Values given as an approximate guide and varying depending on eccentric adjustments.

All dimensions are subject to change without notice.