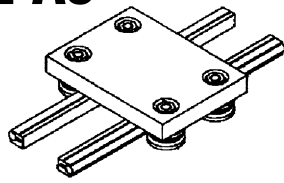


LINEAR SLIDE SYSTEM TYPE AS



Base of support

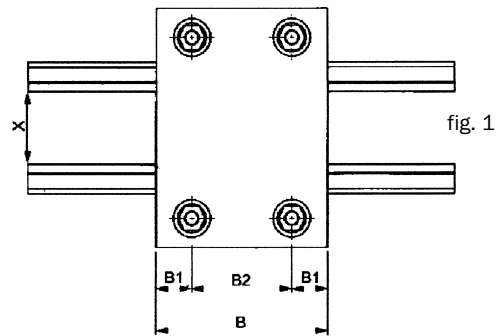
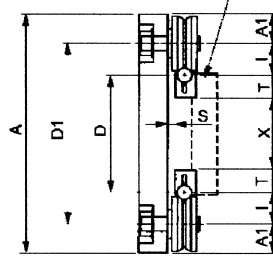
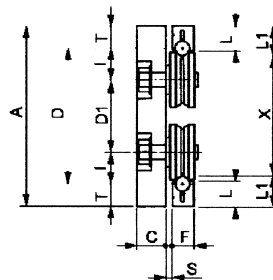
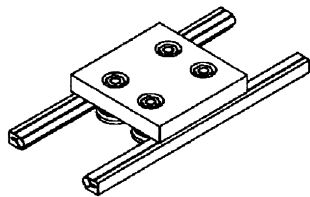


fig. 1



Template

Template

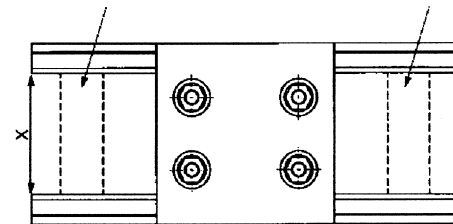


fig. 2

Part Numbers			Dimensions (in mm)							Minimum Dimensions			
Type	Guideway + Length	Wheels	I	T	C	F	L	L1	S*	B	B1	B2	A1
AS106	S10 ___	C106 + E106	14.5	15.5	10	14.5	17	20.5	1.5	51	12.0	27	12
AS208	S10 ___	C208 + E208	18.0	15.5	15	14.5	17	20.5	2.5	67	16.0	35	16
AS208R	S10 ___	C208R + E208R	18.0	15.5	20	14.5	17	20.5	2.5	67	16.0	35	16
AS210	S10 ___	C210 + E210	22.0	15.5	20	14.5	17	20.5	5.0	77	17.5	40	20
AS312	S20 ___	C312 + E312	28.0	25.0	20	27.0	27	35.0	1.0	91	22.0	47	22
AS316	S20 ___	C316 + E316	28.0	25.0	25	27.0	27	35.0	6.5	91	22.0	47	22
AS416	S20 ___	C416 + E416	35.0	25.0	25	27.0	27	35.0	6.5	123	30.0	63	30
AS416R	S20 ___	C416R + E416R	35.0	25.0	25	27.0	27	35.0	6.5	123	30.0	63	30
AS420	S20 ___	C420 + E420	35.0	25.0	25	27.0	27	35.0	6.5	123	30.0	63	30

* Minimum distance can be increased by inserting shimming washers between carriage and wheel.

In the "AS" System, values A; D; D1 can only be determined once you have established the required X value.

This system is useful when the center-to-center distance D between the guides is to be increased or decreased, or when you want a clear space between the guides.

Use of this system entails carefully aligning the guides parallel, which can be done with the aid of templates (simple metal parallelepipeds) to be used when making holes and tightening screws (fig. 2), or by milling two marks at the desired distance (fig. 1). This system can be used with bars fitted either on the inside (fig. 1) or on the outside (fig. 2).

How to order the "AS" System:

Since this system is highly sectional, its components must be ordered separately as follows:

Guideway: See page 133 for dimensions. To order state part no. type followed by length in mm. ex. S20 L = 1500

Wheels: See pages 129 to 130 for dimensions. To order state part number ex. C312

Carriage: See pages 134 to 135 for dimensions. To order state part number and abbreviate which material:

A = Aluminum S = Steel ex. M312A

All dimensions are subject to change without notice.