

ROLLER BEARING GUIDE WHEELS

- suitable for 120° Guideways

This guideway system runs on grooved wheels with an idler pin and round shafts. Each wheel size is produced with a concentric and eccentric bolt. Concentric wheels enable you to achieve parallelism between the carriage and guide, while eccentric wheels eliminate play. The system can be pre-loaded to achieve smoother or more rigid sliding depending on application demands. The 120° groove on the outer race insures that the load is distributed over two points of the guide at all times meaning each carriage slides smoothly along its guide. The bolt features a recessed hexagonal nut at both ends so that the preload can be adjusted from whichever side is most convenient.

120° V-Grooved Roller Bearing Guide Wheels

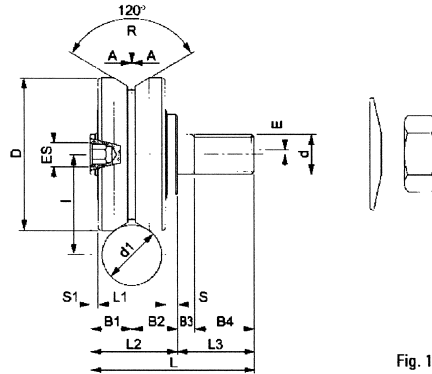


Fig. 1

Part No.		Dimensions in mm																Load		Weight oz.
Wheel	Guide	D	d	d1	L ₁	L ₂	L ₃	L	B ₁	B ₂	B ₃	B ₄	E	E _s	I	S	S ¹	Dynamic A(N)	Static R(N)	
C106*	S10/D10	22	M6	10	11	14.5	9.5	24.0	6.5	8	2.5	7	1.0	2.5	14.5	2.5	1.0	300	300	1.1
E106*	S10/D10	30	M8	10	14	18.0	14.0	32.0	9.0	9.0	4.5	9.5	1.0	3.0	18.0	2.0	2.0	400	1000	2.3
C208	S10/D10	30	M10	10	14	18.0	19.0	37.0	9.0	9.0	4.0	15.0	1.0	5.0	18.0	2.0	2.0	600	1300	2.6
E208R*	S10/D10	39	M10	10	18	22.5	19.0	41.5	11.0	11.5	4.0	15.0	1.0	5.0	22.0	2.5	2.0	600	1300	5.3
C210*	S10/D10	40	M12	20	18	24.0	19.0	43.0	11.0	13.0	4.0	15.0	1.5	5.0	28.0	4.0	2.0	800	1600	5.8
E312	G20	40	M16	20	18	30.0	24.0	54.0	11.0	19.0	10.0	14.0	1.5	8.0	28.0	10.0	2.0	1600	3500	7.4
C316	S10/D10	57	M16	20	22	33.5	24.0	57.5	14.5	19.0	10.0	14.0	1.5	8.0	35.0	8.0	3.5	1600	3500	14.6
E416*	G20	58	M16	20	25	31.5	24.0	55.5	12.5	19.0	10.0	14.0	1.5	8.0	35.0	6.5	-	4300	4300	15.2
C416R*	S20/D20	57	M20	20	22	33.5	24.0	57.5	14.5	19.0	10.0	14.0	1.5	8.0	35.0	8.0	3.5	5000	7850	17.3
E420	G20																			

C type - concentric
E type - eccentric

Roller Bearing Load Runners

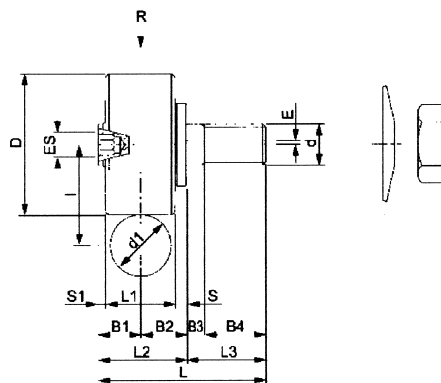


Fig. 2

Part No.		Dimensions in mm																Load		Weight oz.
Wheel	Guide	D	d	d1	L ₁	L ₂	L ₃	L	B ₁	B ₂	B ₃	B ₄	E	E _s	I	S	S ¹	Dynamic A(N)	Static R(N)	
CC210*	S10/D10	34	M10	10	17	22.0	19.0	41.0	10.5	11.5	4.0	15.0	1.0	5.0	22.0	3.0	2.0	-	1300	5.3
EC210*	S10/D10	36	M12	20	20	23.5	19.0	42.5	10.5	13.0	4.0	15.0	1.0	5.0	28.0	3.0	0.5	-	1600	6.7
CC312	S10/D10	50	M16	20	25	34.0	24.0	58.0	15.0	19.0	10.0	14.0	1.5	8.0	35.0	6.5	2.5	-	3500	16.9
EC312	G20																			
CC416*	S10/D10																			
EC416*	G20																			

Options:

Nickel plated and made watertight - Add RS to Wheel Part No. ex. C106RS.

Stainless Steel only available for wheels marked * - Add SS to Wheel Part No. ex. C106SS.

The nut and Belleville Washer are supplied as standard issue. The latter, apart from acting as a washer, also prevents unscrewing.

For improved unscrewing protection, the regular nut can be replaced with a locknut.

All dimensions are subject to change without notice.